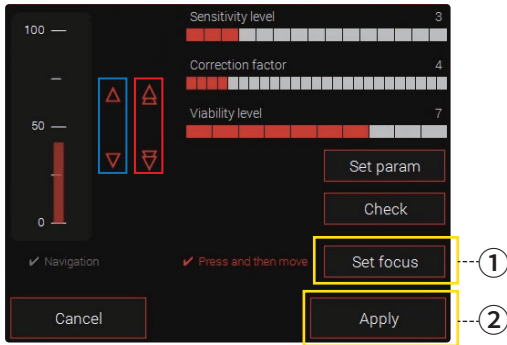




1. Focus setting

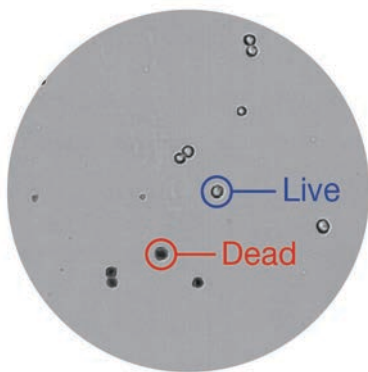


1. Setting focus using arrow buttons

- » Use **left arrow buttons (single arrow)** to adjust focus in smaller scale.
- » Use **right arrow buttons (double arrows)** to adjust focus in broader scale.

2. After adjusting, click 'Set focus' > 'Apply' button to save focus setting.

2. Good focus



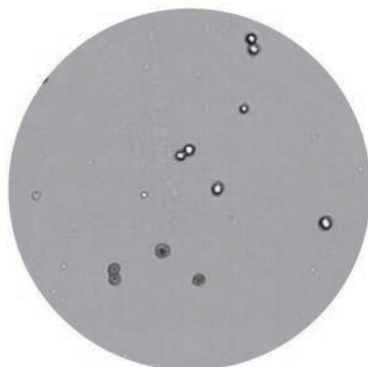
Live cells

- » The center of live cells should be almost the same color as the background.
- » The boundary of live cells should be distinct and dark.

Dead cells

- » Dead cells should have a uniformly dark color with no bright center.

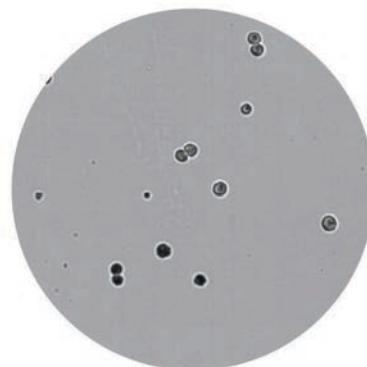
3. Bad focus



The focus is set too high.

Solution:

Use DOWN arrow button to adjust focus.



The focus is set too low.

Solution:

Use UP arrow button to adjust focus.

⚠ **Note:** When using more than one cell type, focus should be set for each cell type.